



COBIA

HAVE IT ALL.



CONTENTS

- 1 Letter From the Helm
- 3 Have It All.
- 5 Model Lineup, Color Options
- 7 Partners
- 8 Commitment to Quality
- 9 Designed & Built by Anglers
- 11 Center Console Overview
- 13 350 CC
- 15 320 CC
- 17 305 CC
- 19 285 CC
- 21 285 Open
- 23 265 CC
- 25 265 Open
- 27 245 CC
- 29 Dual Console Overview
- 31 280 DC
- 35 240 DC
- 37 220 DC
- 39 Let's Connect
- 41 Model Specifications



LETTER FROM THE HELM

At Maverick Boat Group, we take great pride in the continued growth and evolution of the Cobia brand. Designed to effortlessly bridge the worlds of angling and family fun, Cobia delivers unmatched versatility and embodies the perfect balance of fishing smarts and comfort.

We know your time on the water is precious, which is why we pour so much thought and effort into every detail. Whether you're chasing new fishing grounds, exploring a

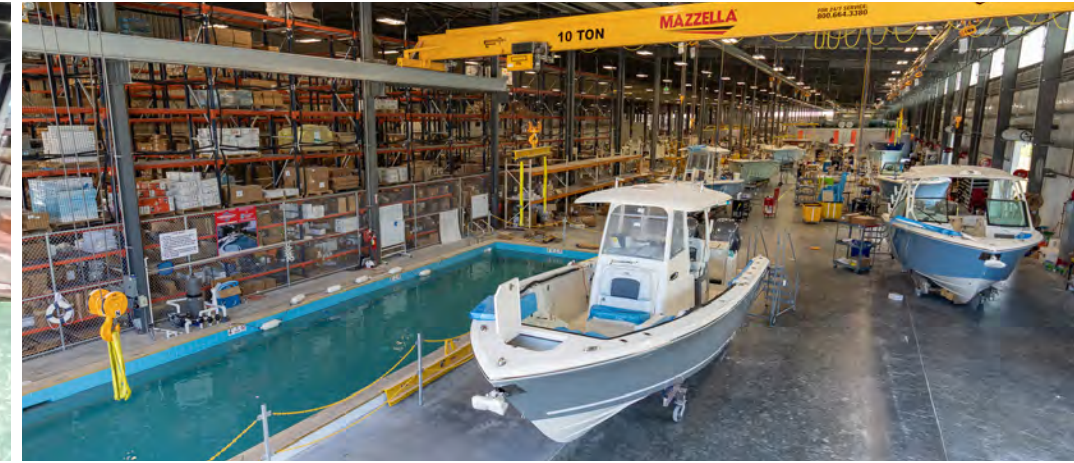
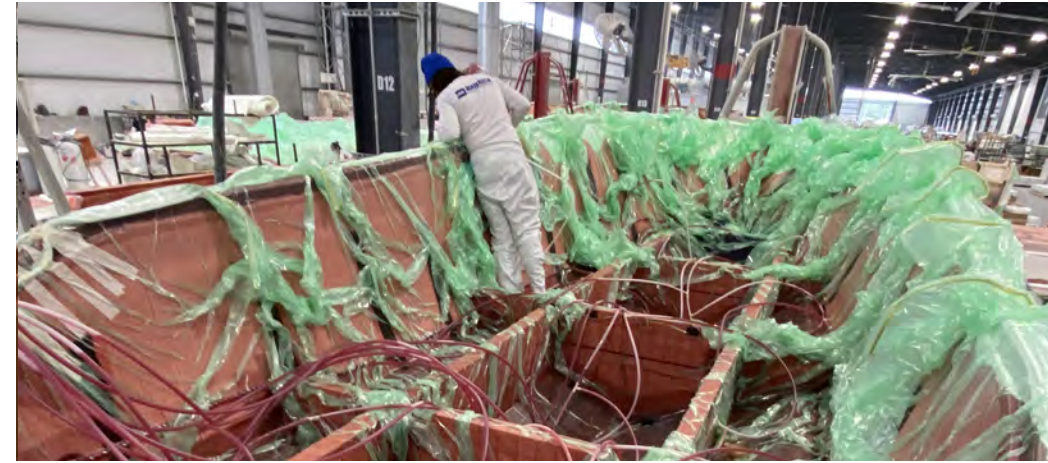
hidden sandbar with family, or doing a bit of both, there's a Cobia model designed just for you. Ensuring you Have It All—performance, comfort, and versatility—is our number one priority.

Our success stems from the expertise of our talented team, the precision of our state-of-the-art manufacturing facilities, and our unwavering commitment to innovation. This approach allows us to consistently deliver boats with

best-in-class quality and performance, creating loyal customers who trust us for life.

To explore all that Cobia has to offer, browse these pages, visit our website at cobiaboats.com, or stop by a factory-authorized dealer. We're grateful for the trust you place in our boats and are dedicated to making every moment on the water unforgettable.

See you on the water!





HAVE IT ALL.

Why you buy a boat matters. That's why which one you buy is even more important. Cobia boats are the perfect balance of fishing smarts and comfort, letting you HAVE IT ALL.

HIGHER QUALITY. HIGHER PERFORMANCE.

Cobia boats deliver best-in-class craftsmanship and performance with an exceptional blend of fishing capability and ultimate comfort and style. It all starts with a superior hull design, better structural integrity, and more durable key componentry.

FISHING FEATURES DONE RIGHT.

Designed by anglers, Cobia's blend of fishing functionality make every cast count. More accessible, higher capacity storage for your gear, thoughtfully designed livewell systems and intelligent deck layouts only add to their fishability.

NO SACRIFICES ON COMFORT.

Crafted with more than fishing in mind, Cobia delivers comfort without compromise. The easy to operate helms, strategically placed seating, and spacious heads ensure everyone enjoys the ride.

We challenge you to find a boat that blends family-friendly functionality and tournament-grade performance into a single package the way Cobia does.

MODEL LINEUP

CENTER CONSOLE MODELS



350 CC



320 CC



305 CC



285 OPEN



285 CC



265 OPEN



265 CC



245 CC

DUAL CONSOLE MODELS



280 DC



240 DC



220 DC

UPHOLSTERY COLORS



Cool Touch Vinyl Fabric

Cool Touch Vinyl Fabric



White/White



Platinum/White



Caramel/Cream



Platinum/Storm



Caramel/Khaki

HULL COLORS

Pure White

Sardina Green

Haze Grey

Whisper Grey

Atlantic Blue

Bayside Blue

Deep Water Blue

BOOT STRIPE COLORS



PARTNERS

Our commitment to creating higher quality, higher performance boats is evident in the partnerships we keep. Only the best products are considered when engineering and building our boats, and it's reflected on the water and on these pages.



No sacrifice is made when determining how to power your Cobia boat. That's why Yamaha Marine powers Cobia with award-winning outboards and legendary dependability. You can count on reliable, efficient engine performance thanks to the advanced technology and research Yamaha puts behind its engines. Avid boaters know and trust the Yamaha brand, that's why we do too.



From instrumentation to navigation, Cobia trusts Garmin Marine Electronics to give you an unsurpassed sense of confidence no matter your level of experience. Our engineers work hard to make certain our user-friendly helms are easy to operate and keep everything you need within arms reach. Factory-installed Garmin Marine Electronics ensure your day on the water is reinforced by leading-edge technology that will take you exactly where you want to go. The Garmin Force Kraken trolling motor is also available on select models.



Your Cobia experience has a soundtrack. Make it your own with the high-end audio components provided by our partner, JL Audio. Thoughtfully designed and sea tested, you'll experience top-flight sound from well-placed marine speakers and subwoofers. It all comes together to deliver a 360° audio experience ideal for your tastes. That's one more way Cobia lets you have it all.



At Cobia, we're committed to safety and comfort done right. That's why we work with Seakeeper, the global leader in marine stabilization technology. Offered as an optional feature on select models, Seakeeper is a computer-controlled gyroscopic stabilizer that eliminates up to 95% of boat roll on boats 23' and up. Less boat roll—the rocking sensation that leads to seasickness, fatigue and anxiety—means you'll have an enjoyable day out, from start to finish.

BUILT WITH **VARIS**

OUR PROPRIETARY VACUUM-ASSISTED RESIN INFUSION SYSTEM FOR INCREDIBLY STRONG HULLS.

HIGHER QUALITY.

Vacuum infusion is universally accepted by the world's premium boat builders as the very best way to build a boat. It precisely controls the amount of resin in the build structure, and the process is more environmentally and worker-friendly. Maverick Boat Group's proprietary VARIS process results in a single, fused hull structure that is incredibly strong and has the highest strength-to-weight ratio possible in fiberglass construction.

HIGHER PERFORMANCE.

More fuel efficient. Faster. Optimized load-carrying capacity. On the water, you can tell the difference in how solid and stiff the hull feels when running—punching through the waves rather than absorbing their impact. VARIS truly maximizes the strength and performance of the Cobia boats built with it, giving them the quality and performance that set Cobia apart.



WARRANTY

Cobia Boats offer superior "no wood" construction, meaning you'll never have to deal with rot. All Cobias are backed by a no-nonsense, 10-year limited warranty on hull and a 3-year and 1-year limited warranty on various non-structural components.

For additional questions on warranty timelines, services and/or repairs, please contact your local Cobia Boats dealer.



CERTIFIED PERFORMANCE

Cobia Boats are NMMA Certified using American Boat and Yacht (ABYC) standards. NMMA Certification guides the recreational marine industry worldwide, helping to improve boat manufacturing and ensure quality products for consumers throughout the world.



The National Marine Manufacturers Association (NMMA) is the nation's leading trade association representing boat, marine engine and accessory manufacturers. Collectively, NMMA members manufacture an estimated 85 percent of marine products used in North America.

For more information visit NMMA.org.



The American Boat & Yacht Council (ABYC) is a non-profit, member organization that develops voluntary global safety standards for the design, construction, maintenance and repair of recreational boats.

For more information visit ABYCINC.org.



DESIGNED AND BUILT BY ANGLERS.

At Cobia, we aren't just behind the scenes designing and building your next boat, we are out there running them every chance we get – chasing tight lines in tournaments and soaking up rays at sandbars, all aboard the boats we build. We're the first ones to find ways to improve them because we expect them to outwork whatever you might put them through. It's a commitment we take as seriously as we take our fishing.



CENTER CONSOLES

Ranging from 22-35' with single, twin and triple outboard engine options, Cobia Center Consoles bring you the best in 360-degree accessibility and agility. With its centrally located helm, the captain navigates while the rest of the boat's crew hauls in their catch from a 360° fishing platform.

Built on our solid, smooth running hulls, you'll love the performance, safety and security of a Cobia CC – not to mention walk-down heads, stylish finishes, fiberglass hardtops and dive doors on most models. Fishing features include plenty of rod holders, under-gunnel storage, fish boxes, livewells and high-capacity spots to stow your gear. Customization options abound as well, so there is no doubt that whatever Cobia boat you build, you'll **Have It All**.



350 CC

THE PERFECT BLEND OF PERFORMANCE,
SOPHISTICATION AND FISHING SMARTS.



The 350 CC fishes hard and plays easy with a rare combination of high style and ultra performance. A vacuum-infused, double-stepped hull makes getting to the fishing grounds fast and fuel efficient while elegant topside amenities bathe you in style and comfort. With a wide-open cockpit, there's plenty of room for a group of anglers, yet it easily converts to a cruising and sandbar-hopping vessel with well-appointed seating for 11.

SPECIFICATIONS

LOA	34' 4"
Beam	11' 2"
Draft	24"
Weight (approx. with engine)	10,560 lbs
Fuel Capacity	320 gal
Deadrise	21.6°
Maximum Horsepower	1,050 hp

Engine Options: Triple Yamaha 300s and 350s, Twin Yamaha 450s or Triple Mercury 350s, Twin Mercury 400s

Built with **VARIS**



Explore options & features to build your perfect Cobia 350 CC.





320 CC

UNCOMPROMISING EXCELLENCE
BY DESIGN.



The 320 CC is a spacious, big water hull capable of long-range trips that can still be comfortably trailered. Designed for the discerning family fisherman, it blends a tournament-ready layout with the comfort and style of a cruiser. Beyond the hardcore fishing features like a tackle center, rod storage and twin livewells, the 320 CC has elegant seating, an electric bow table and inward-opening side door.

SPECIFICATIONS

LOA	32'0"
Beam	10'3"
Draft	23"
Weight (approx. with engine)	9,260 lbs
Fuel Capacity	275 gal
Deadrise	21°
Maximum Horsepower	900 hp
Engine Options: Twin Yamaha 300s, 350s and 450s or Twin Mercury 350s and 400s	

Built with **VARIS**



Explore options & features to build your perfect Cobia 320 CC.

305 CC

PERFORMANCE AT ITS PEAK.



Blending offshore capability with refined comfort and style, the brand-new Cobia 305 CC redefines versatility in the 30-foot center console class. Designed to match your passion for serious fishing and laid-back cruising alike, the 305 CC is rated for up to 800 horsepower and features the largest, most functional deck layout in its competitive class, making it equally at home chasing fish or hosting friends at the sandbar. This is what being on the water is supposed to feel like.

SPECIFICATIONS

LOA	30'5"
Beam	10'6"
Draft	21"
Weight (approx. with engine)	9,405 lbs
Fuel Capacity	265 gal
Deadrise	21°
Maximum Horsepower	800 hp
Engine Options:	Twin Yamaha 300s and 350s

Built with **VARIS**



Explore options & features to build your perfect Cobia 305 CC.



285 OPEN

DESIGNED WITH THE ANGLER
IN MIND.



The all-new 285 Open is designed for both the avid family angler and the dedicated tournament angler. With an increased focus on the open space layout for full walk-up access to the bow and stern, the 285 Open takes fishing features even a step further by including four cockpit insulated fish boxes with macerated overboard drains, standard kite rod holders and an optional deep drop set-up that includes reinforced gunnel boards and electric reel outlets.

SPECIFICATIONS

LOA	28' 5"
Beam	9' 11"
Weight (approx. with engine)	7,250 lbs
Fuel Capacity	231 gal
Deadrise	21°
Maximum Horsepower	700 hp
Engine Options: Yamaha Twin 200s, 300s and 350s or Twin Mercury 350s	

Built with **VARIS**



Explore options & features to build your perfect Cobia 285 Open.

285 CC

THE ULTIMATE IN VERSATILITY.



Your Cobia crew will love finding new locales to explore aboard the all-new 285 CC. With an intelligently designed layout, you'll have plenty of room for all your on-water adventures. The helm can accommodate dual 16" Garmin screens, so navigating is second nature. And everything you need is easily accessible with multiple helm seating storage configuration options and a tuna door that makes boarding a breeze.

SPECIFICATIONS

LOA	28' 5"
Beam	9' 11"
Weight (approx. with engine)	7,250 lbs
Fuel Capacity	231 gal
Deadrise	21°
Maximum Horsepower	700 hp
Engine Options: Yamaha Twin 200s, 300s and 350s or Twin Mercury 350s	

Built with **VARIS**



Explore options & features to build your perfect Cobia 285 CC.

265 OPEN

WIDE OPEN POSSIBILITIES.



The 265 Open takes angling a step further. It builds on the features and innovation of the 265 CC—the inward-opening side entry door; user-friendly helm; available integrated hardtop frame with tempered glass enclosure, wiper and vent; plus, the updated Garmin electronics package offering that can accommodate dual 16" screens. But the 265 Open is more fishing focused with a layout that's designed to give you more room for the crew and all your gear. The most noticeable difference is the increased open area fore and aft for full walk-up access to the bow and stern. Multiple helm seat station configurations allow you to pick your favorite. A forward console jump seat provides a place to relax when you need it and tucks out of the way when you don't.



Explore options & features to build your perfect Cobia 265 Open.

Built with **VARIS**

SPECIFICATIONS

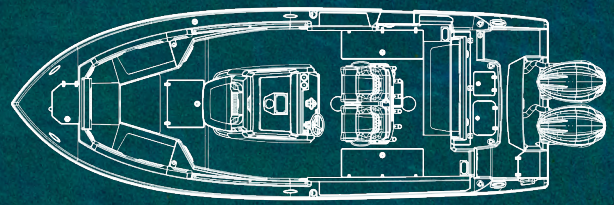
LOA	26' 5"
Beam	9' 5"
Draft	21"
Weight (approx. with engine)	6,450 lbs
Fuel Capacity	161 gal
Deadrise	21°
Maximum Horsepower	500 hp
Engine Options:	Yamaha Twin 150s, 200s and 250s





265 CC

EXPERIENCE YOUR BEST DAYS ON THE WATER.



Whether you are looking to do more fishing or a little more than fishing, the brand-new Cobia 265 CC delivers. Standard features include an inward opening side entry door, a newly designed hideaway aft bench seat with backrest, dual fuel fills and a user-friendly helm that can accommodate up to two 16" screens and can be outfitted with an integrated hardtop frame with tempered glass enclosure, wiper and vent. The updated Garmin electronics packages will help you navigate to the best fishing grounds or your favorite sandbar with ease and the new Garmin Force Kraken trolling motor option will keep you right on your spot.



Explore options & features to build your perfect Cobia 265 CC.

SPECIFICATIONS

LOA	26' 5"
Beam	9' 5"
Draft	21"
Weight (approx. with engine)	6,450 lbs
Fuel Capacity	161 gal
Deadrise	21°
Maximum Horsepower	500 hp
Engine Options:	Yamaha Twin 150s, 200s and 250s





245 CC

THE 24-FOOT CENTER
CONSOLE REINVENTED.



The all-new Cobia 245 CC is built to hit the water running. Designed with Cobia's signature dry ride hull, plus the option for a Seakeeper Ride system, you'll cruise from port to the fishing grounds with ease. And with comfort features like fold-down transom seating and an optional bow sunshade, every inch is designed to seamlessly mesh kicking back with the crew or chasing the next big catch.

SPECIFICATIONS

LOA	24' 6"
Beam	9' 5"
Draft	18"
Weight (approx. with engine)	6,100 lbs
Fuel Capacity	135 gal
Deadrise	20°
Maximum Horsepower	350 hp
Engine Options: Twin Yamaha 150s or Single Yamaha 300s and 350s	



Explore options & features to build your perfect Cobia 245 CC.

DUAL CONSOLES

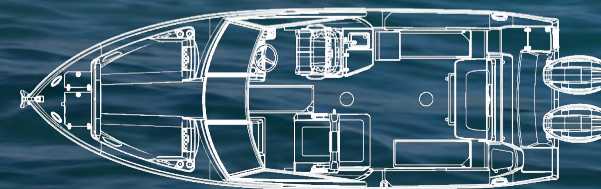
With single and twin outboard engine options, the Cobia Dual Console lineup delivers an intelligent deck layout that shifts the helm to one side, providing a central path allowing you to easily move from bow to stern. The fiberglass hardtop, offered on most models, and wrap-around tempered glass windshield protects passengers from the elements when you are running and keeps everyone shaded at the sandbar.

Fishing, diving, cruising—the comfortable, spacious layout provides flexibility and versatility, adjusting to your every whim. In addition to roomy, easy-entry heads, tuna doors and style- and function-based options, there are plenty of rod holders, livewells, fish boxes and tackle storage paired with expansive storage for dive gear, towels and skis. Plus, the proven Cobia hull design, with superior fuel efficiency and open water running performance handles changing conditions with confidence—you really can Have It All in a Cobia Dual Console.



280 DC

TAKE ADVANTAGE OF ALL THE WATER OFFERS.



The Cobia 280 Dual Console is designed to maximize every trip you take whether fishing, cruising or spending time at the sandbar. From the 25-gallon livewell to the fully featured kitchenette and the hideaway bow ladder, it has any outing covered. Add to this its superb inshore and offshore running performance and the 280 DC will make you smile every time you hit the water.

SPECIFICATIONS

LOA	27' 7"
Beam	9' 6"
Draft	23"
Weight (approx. with engine)	7,090 lbs
Fuel Capacity	172 gal
Deadrise	21°
Maximum Horsepower	600 hp
Engine Options:	Yamaha Twin 200s and 300s

Built with **VARIS**



Explore options & features to build your perfect Cobia 280 DC.



240 DC

THE 24-FOOT DUAL CONSOLE
YOU'VE BEEN WAITING FOR.



With its spacious and clean layout, the Cobia 240 DC has a wealth of smart amenities like dedicated seating with deluxe upholstery for nine, including a hideaway aft bench and a convertible first-mate's chaise lounge. Comfort is at a premium, but the serious angler isn't forgotten. It expertly melds soft touches with standard fishing features like dual fishboxes, a livewell, expansive storage and a bait prep area with sink.

SPECIFICATIONS

LOA	25' 1"
Beam	8' 10"
Weight (approx. with engine)	5,910 lbs
Fuel Capacity.....	123 gal
Deadrise.....	21.5°
Maximum Horsepower.....	350 hp
Engine Options:	Yamaha 300 and 350 or Mercury 350



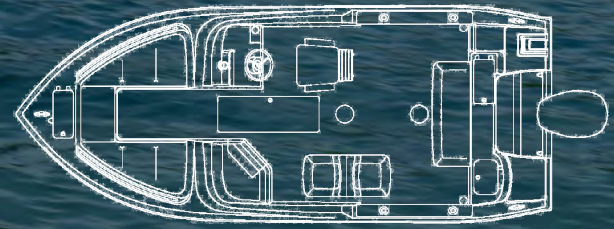
Explore options & features to build your perfect Cobia 240 DC.

Built with **VARIS**



220 DC

THE "DO IT ALL" DUAL CONSOLE.



Elegance, comfort and quality come standard with every 220 Dual Console. Designed with the same silky smooth hull and dry ride as the outperforming 220 CC, the 220 DC handles even the biggest water with confidence, safety and style. A smart, multi-purpose layout is ready to meet any on-the-water adventure for the whole family plus friends.

SPECIFICATIONS

LOA	21' 7"
Beam	8' 9"
Draft	18"
Weight (approx. with engine)	3,460 lbs
Fuel Capacity	89 gal
Deadrise	18°
Maximum Horsepower	250 hp
Engine Options:	Yamaha 200



Explore options & features to build your perfect Cobia 220 DC.

LET'S CONNECT



Keep an eye on our social pages for must-see pics, boat show news, product updates and more. Just hit follow and you'll stay in the know.

And if you're out making memories on the water, we want to know about it! Share your favorite Cobia pics and tag us. #CobiaBoats @CobiaBoats



MODEL SPECIFICATIONS

CENTER CONSOLE MODELS



350 CC

LOA	34' 4"
Beam	11' 2"
Draft	24"
Weight (approx. with engine)	10,560 lbs
Fuel Capacity	320 gal
Maximum Horsepower	1,050 hp
Maximum Speed	62.6 mph

320 CC

LOA	32'
Beam	10' 3"
Draft	23"
Weight (approx. with engine)	9,260 lbs
Fuel Capacity	275 gal
Maximum Horsepower	900 hp
Maximum Speed	64.9 mph

305 CC

LOA	30' 5"
Beam	10' 6"
Draft	21"
Weight (approx. with engine)	9,405 lbs
Fuel Capacity	265 gal
Maximum Horsepower	800 hp
Maximum Speed	58 mph

285 OPEN

LOA	28' 5"
Beam	9' 11"
Draft	19"
Weight (approx. with engine)	7,250 lbs
Fuel Capacity	231 gal
Maximum Horsepower	700 hp
Maximum Speed	60.6 mph

285 CC

LOA	28' 5"
Beam	9' 11"
Draft	19"
Weight (approx. with engine)	7,250 lbs
Fuel Capacity	231 gal
Maximum Horsepower	700 hp
Maximum Speed	61.9 mph

265 OPEN

LOA	26' 5"
Beam	9' 5"
Draft	19"
Weight (approx. with engine)	6,450 lbs
Fuel Capacity	161 gal
Maximum Horsepower	500 hp
Maximum Speed	54.9 mph

265 CC

LOA	26' 5"
Beam	9' 5"
Draft	19"
Weight (approx. with engine)	6,450 lbs
Fuel Capacity	161 gal
Maximum Horsepower	500 hp
Maximum Speed	57.2 mph

245 CC

LOA	24' 6"
Beam	9' 5"
Draft	18"
Weight (approx. with engine)	6,100 lbs
Fuel Capacity	135 gal
Maximum Horsepower	350 hp
Maximum Speed	TBD

DUAL CONSOLE MODELS



280 DC

LOA	27' 7"
Beam	9' 6"
Draft	23"
Weight (approx. with engine)	7,090 lbs
Fuel Capacity	172 gal
Maximum Horsepower	600 hp
Maximum Speed	59.0 mph

240 DC

LOA	25' 1"
Beam	8' 10"
Draft	18"
Weight (approx. with engine)	5,910 lbs
Fuel Capacity	123 gal
Maximum Horsepower	350 hp
Maximum Speed	51.1 mph

220 DC

LOA	21' 7"
Beam	8' 9"
Draft	18"
Weight (approx. with engine)	3,460 lbs
Fuel Capacity	89 gal
Maximum Horsepower	250 hp
Maximum Speed	44.3 mph

Weight and speed specifications are approximate and are subject to many different factors and variables. They are provided as a guidelines only and should not be relied upon as representative of actual performance.

HAVE IT ALL.®

Cobia continually seeks to improve its products. Actual product appearance and features may differ due to ongoing product development. Contact your authorized dealer for the most up-to-date information.

